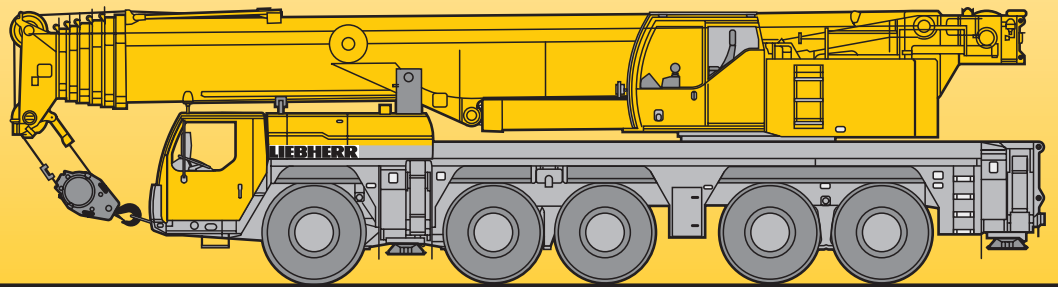


Mobile Crane Grue mobile

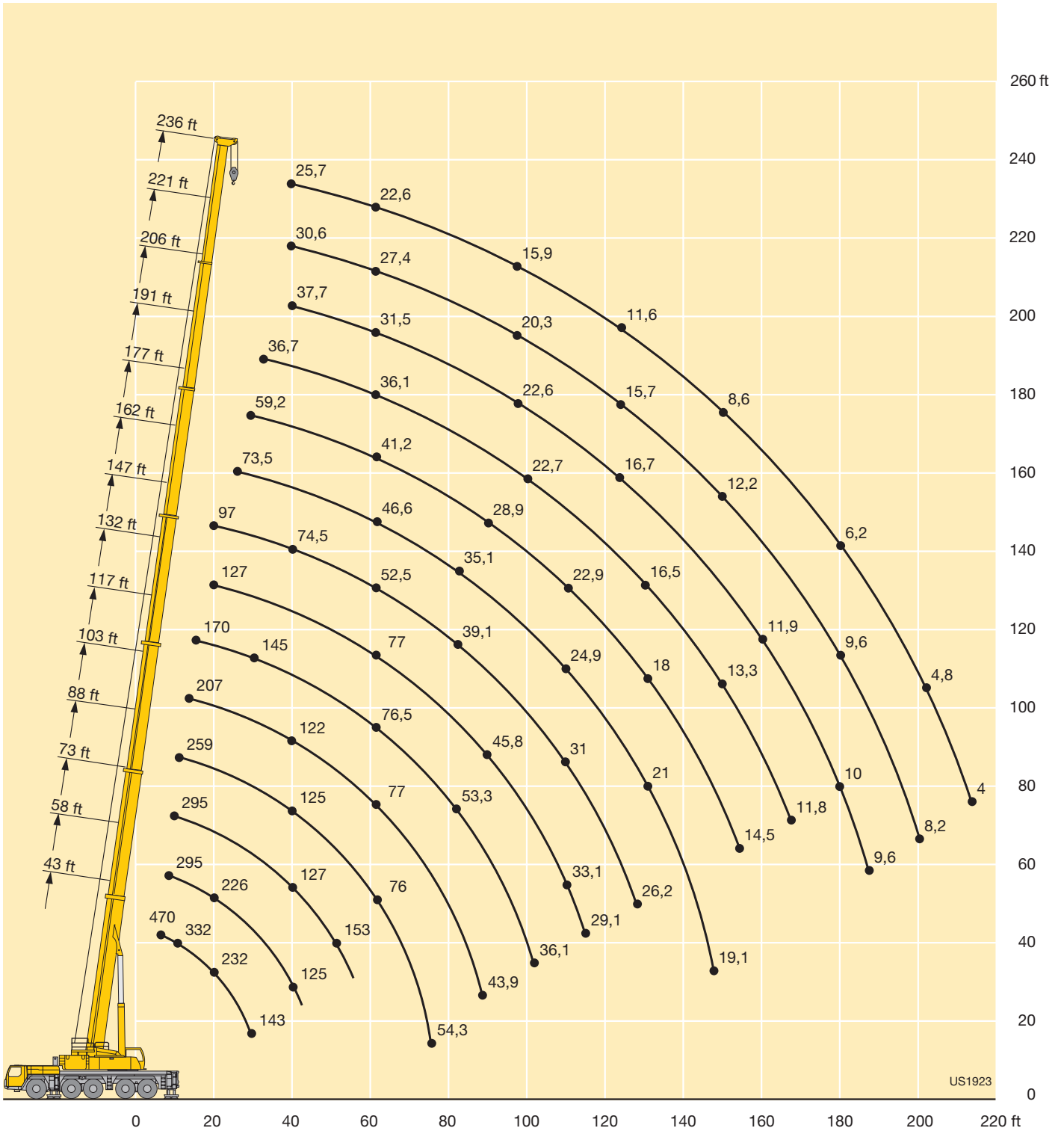
LTM 1200-5.1

Technical Data Caractéristiques techniques



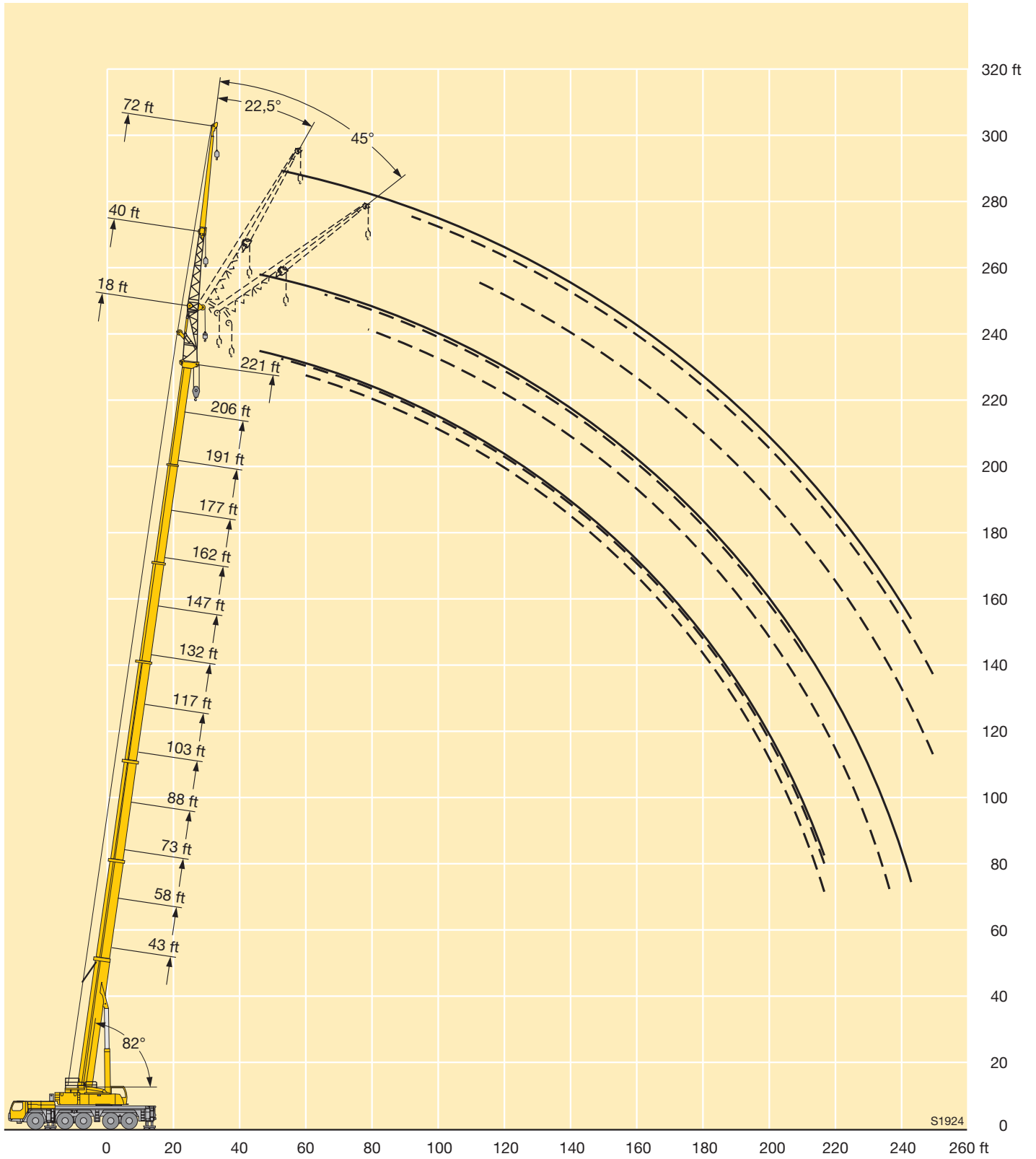
LIEBHERR

Lifting heights Hauteurs de levage

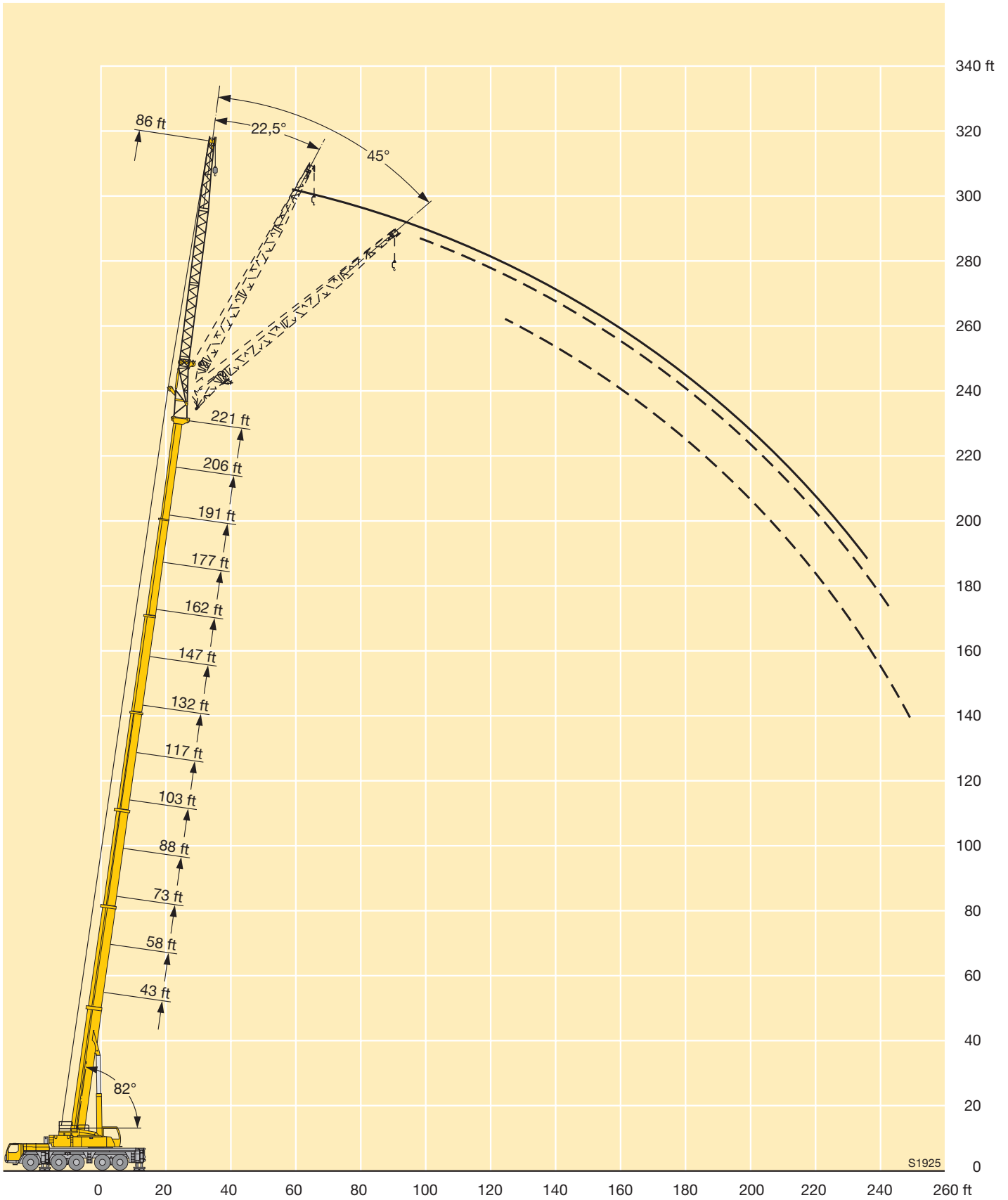


US1923

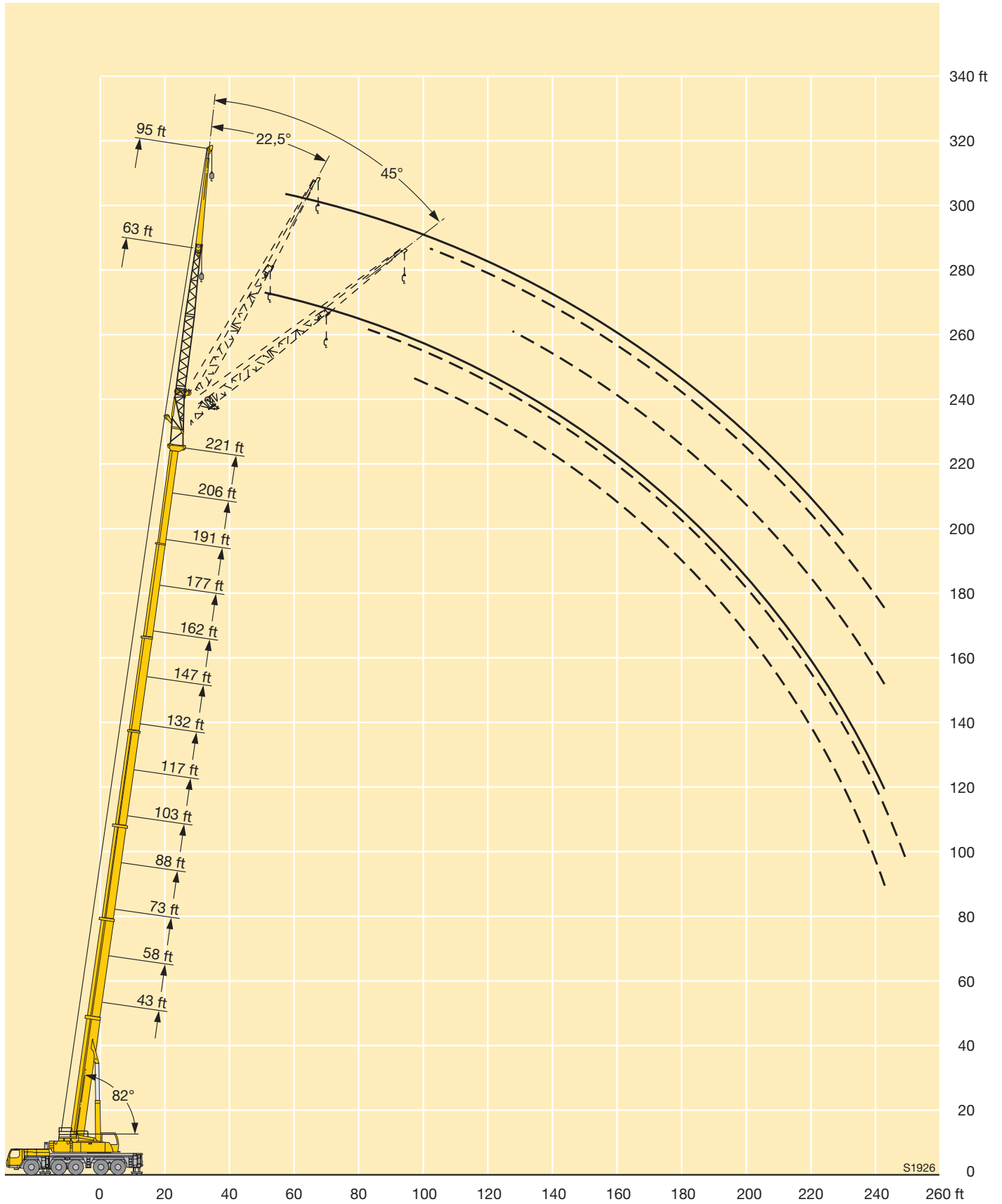
Lifting heights Hauteurs de levage



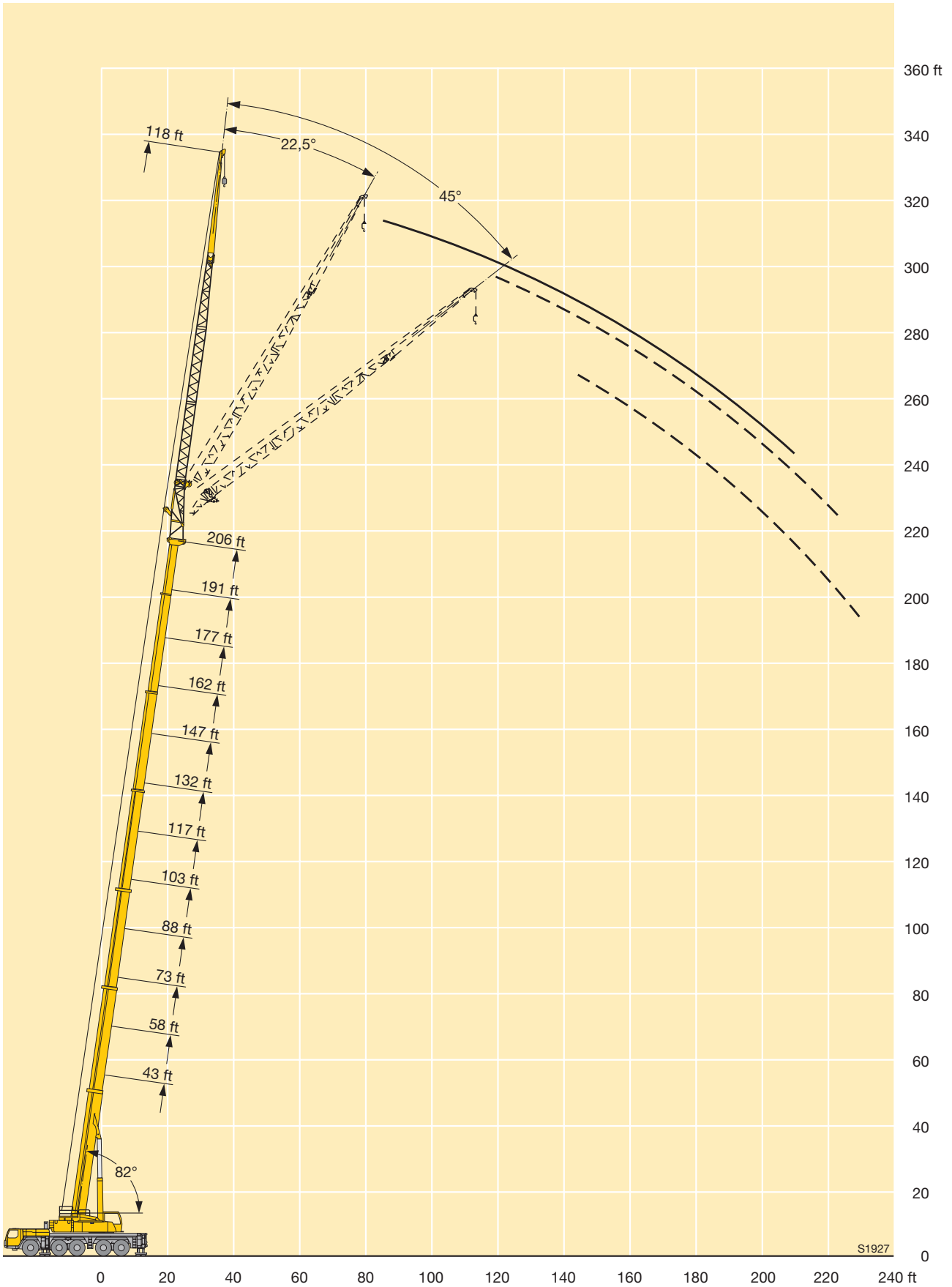
Lifting heights Hauteurs de levage



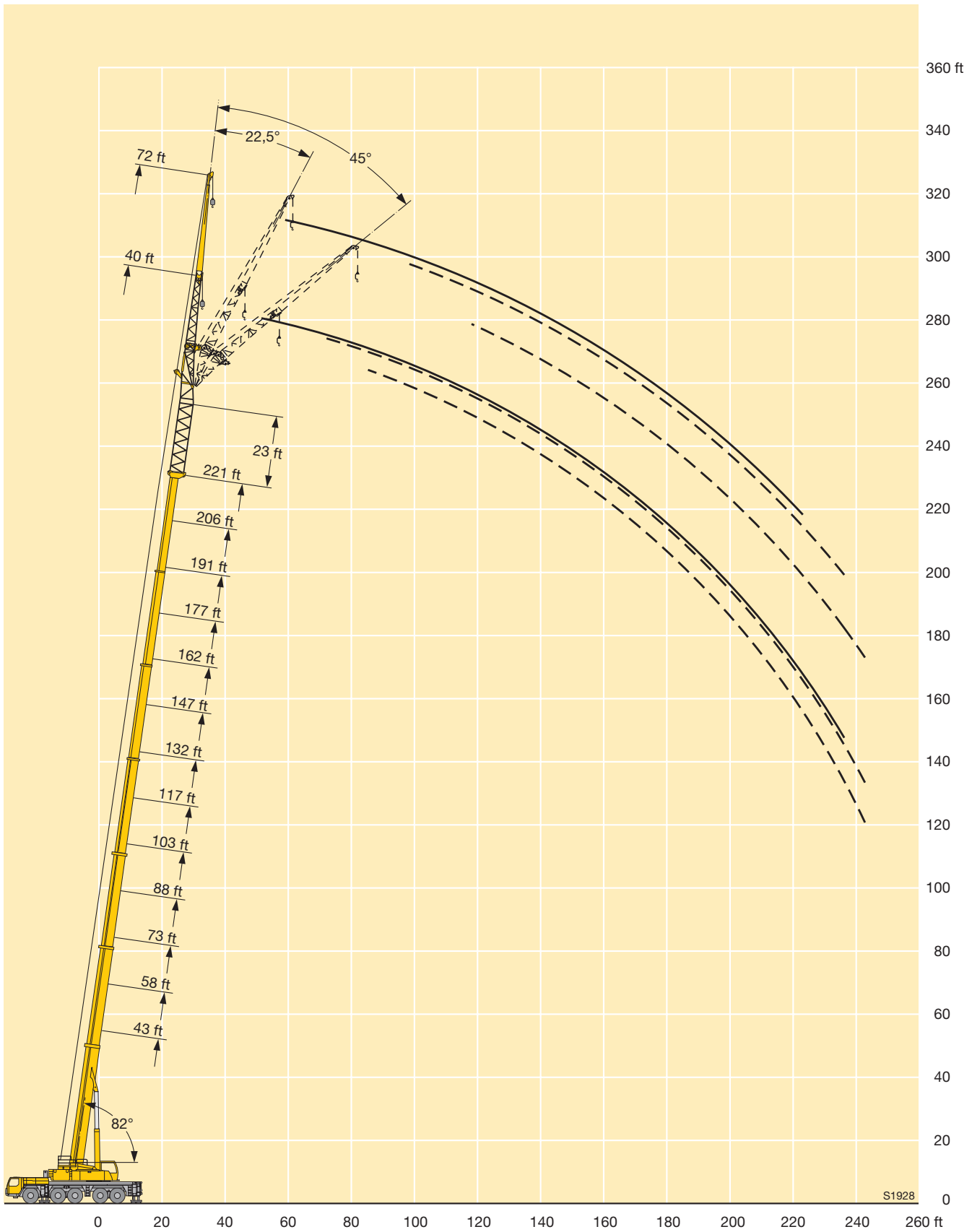
Lifting heights Hauteurs de levage



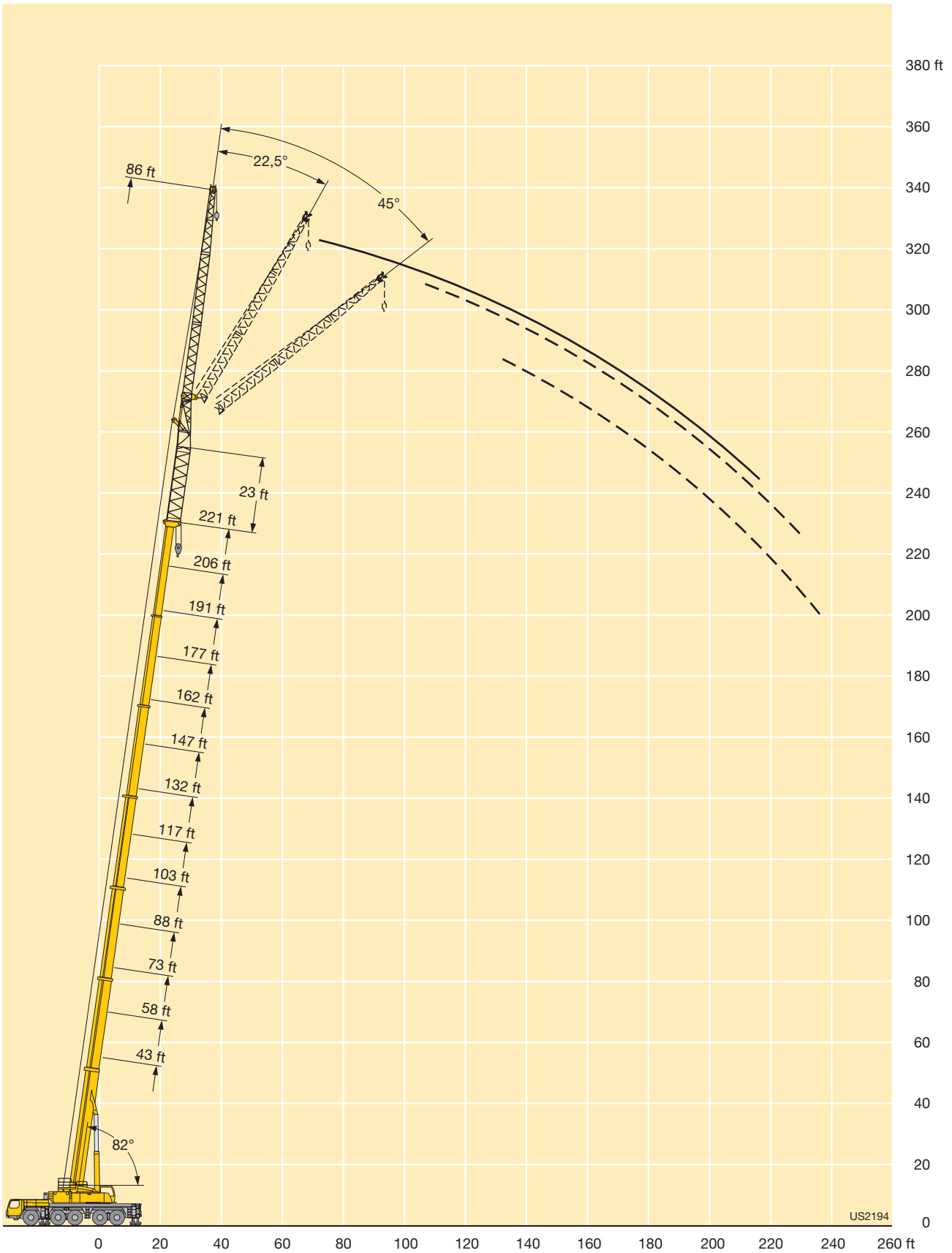
Lifting heights Hauteurs de levage



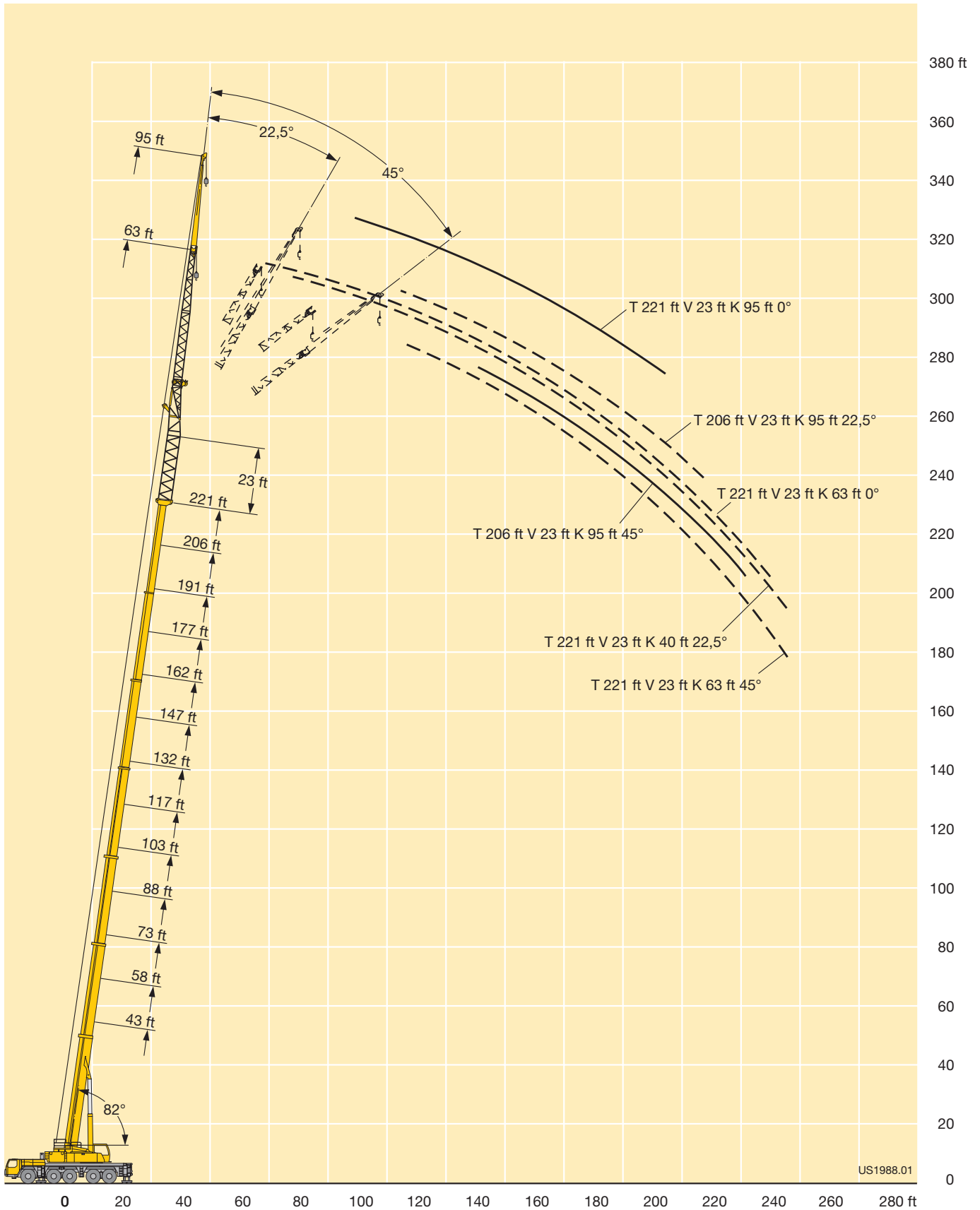
Lifting heights Hauteurs de levage



Lifting heights Hauteurs de levage



Lifting heights Hauteurs de levage



Weights Poids



Axle Essieu	1	2	3	4	5	Total weight lbs Poids total lbs
lbs	26400	26400	26400	26400	26400	132000



Load kips Forces de levage kips	No. of sheaves Poulies	No. of lines Brins	Weight lbs Poids lbs
332.9	9	16	4409
315.3	7	15	3306
238	5	11	2866
156.5	3	7	2292
69	1	3	1851
23.1	-	1	1102

Working speeds Vitesses



		1	2	3	4	5	6	7	8	9	10	11	12	R 1	R 2	
445/95 R 25 (16.00 R 25)	mph	1.2 – 3.54	4.54	5.84	7.52	9.51	12.24	16.10	20.63	26.60	34.18	43.37	49.71	1.3 – 3.79	4.91	43 %
525/80 R 25 (20.5 R 25)		0.5 – 1.55	1.99	2.55	3.29	4.16	5.34	7.02	9.01	11.62	14.85	18.89	24.23	0.56 – 1.68	2.11	55 %



Drive Mécanismes	infinitely variable en continu	Rope diameter / Rope length Diamètre du câble / Longueur du câble	Max. single line pull Effort au brin maxi.
	0 – 427 ft/min single line ft/min au brin simple	0.8" / 920 ft	23605 lbs
	0 – 427 ft/min single line ft/min au brin simple	0.8" / 920 ft	23605 lbs
	0 – 1.3 rpm		
	approx. 65 seconds to reach 82° boom angle env. 65 s jusqu'à 82°		
	approx. 640 seconds for boom extension from 43 ft – 236 ft env. 640 s pour passer de 43 ft – 236 ft		