

Telescopic Crawler Crane Grue télescopique sur chenilles

LTR 1100

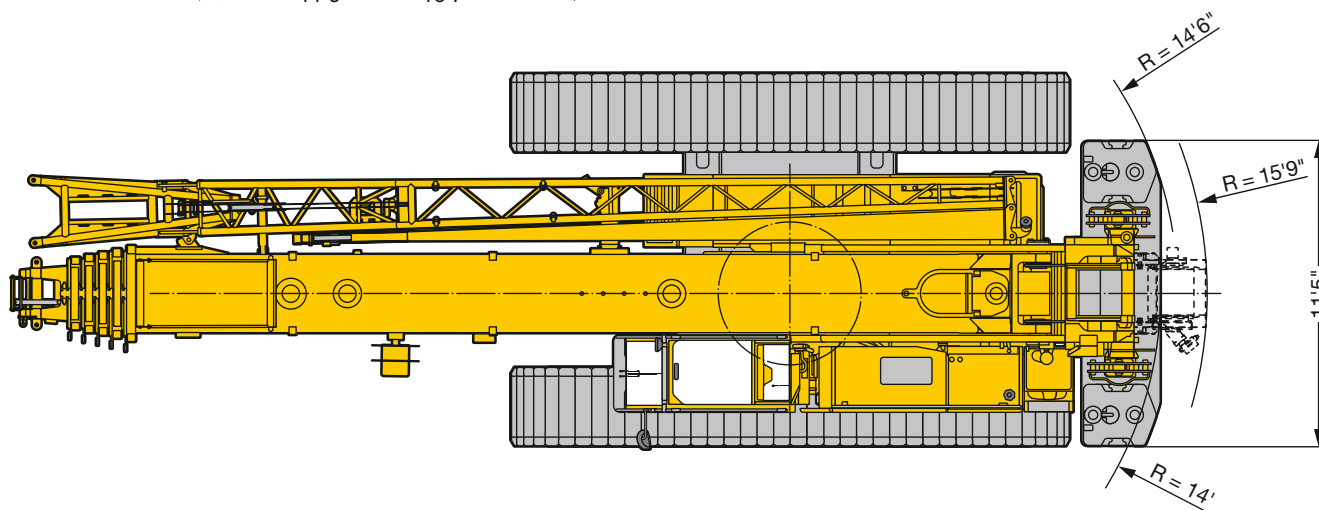
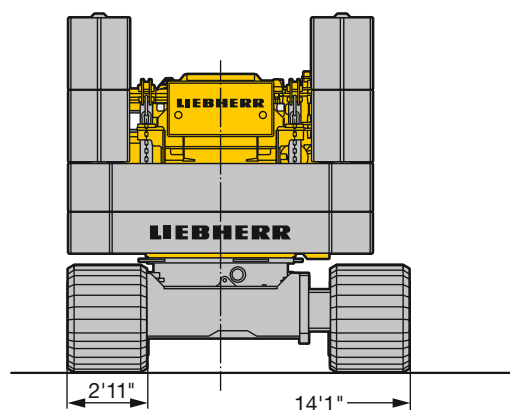
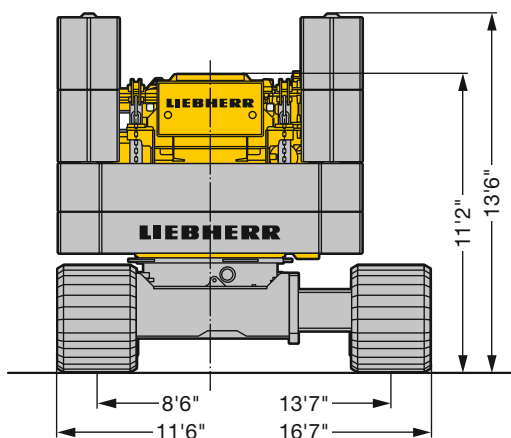
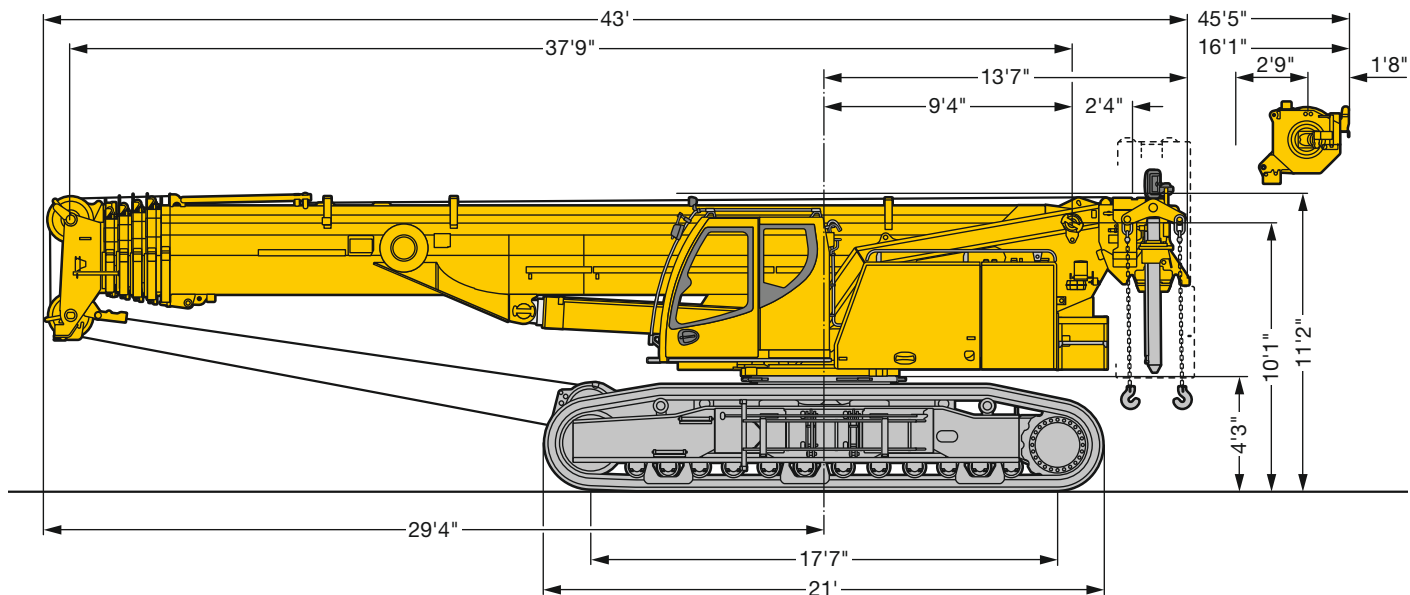
Technical Data
Caractéristiques techniques

LICCON2



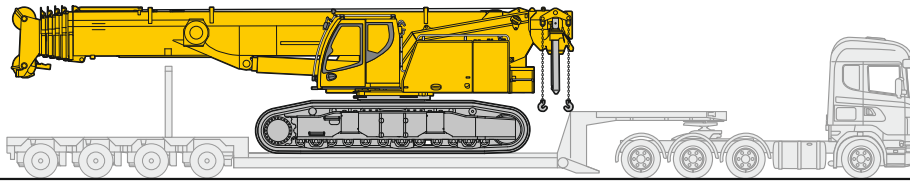
LIEBHERR

Dimensions Encombrement

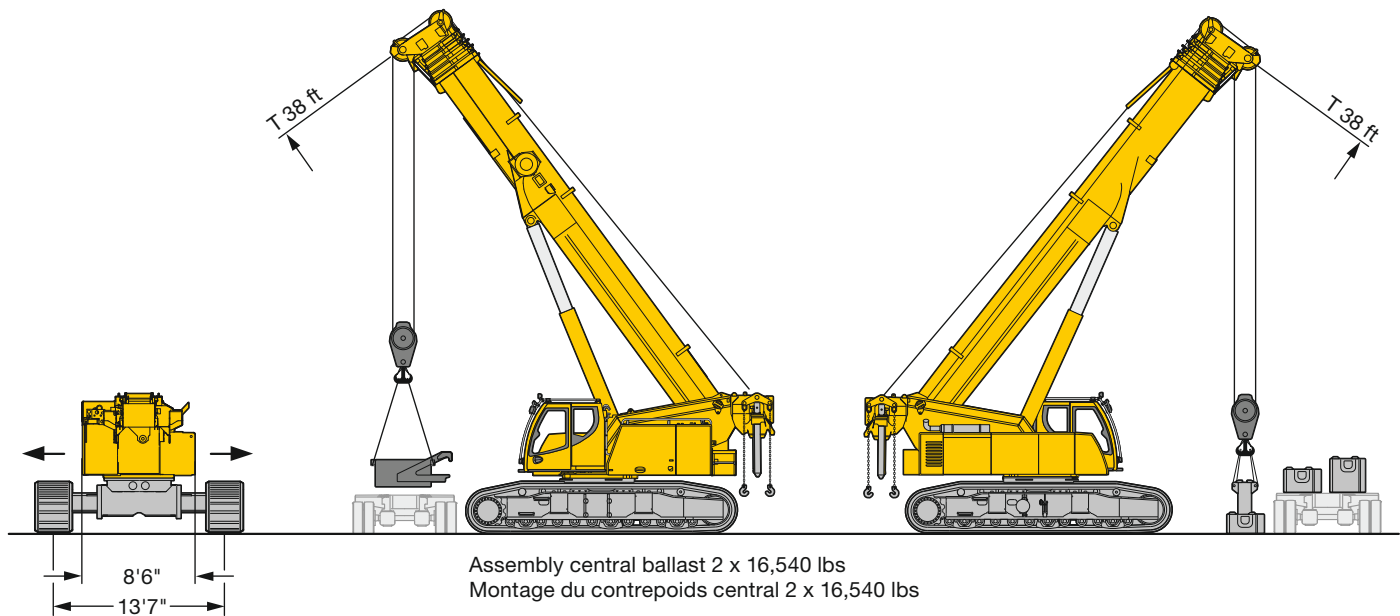


US2863.01

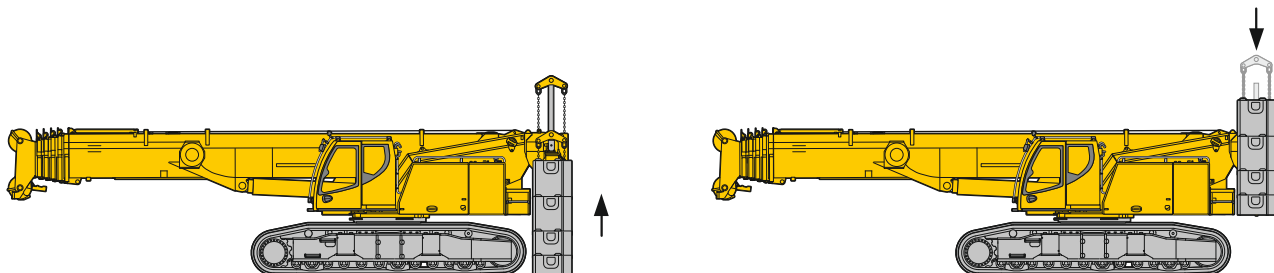
Transportation plan Plan de transport



Transport width 11'6" with crawlers (2'11")
Largeur de transport 11'6" avec chenilles (2'11")



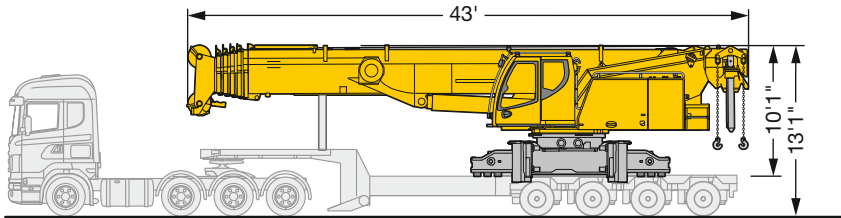
Telescope crawler travel gear out
Elargir le train de chenilles



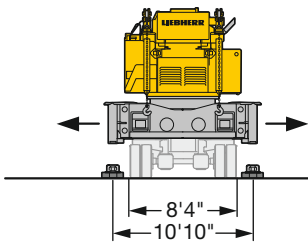
Assembly superstructure ballast
Montage du contrepoids de la partie tournante

US2865

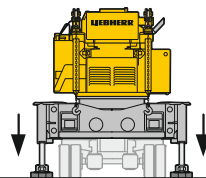
Transportation plan Plan de transport



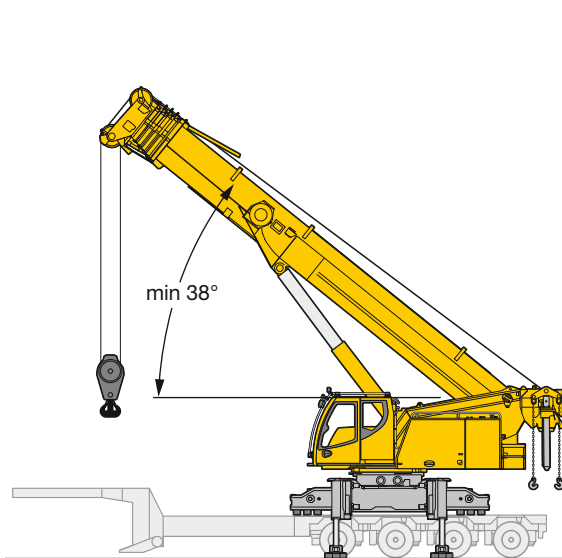
9'10" transport width on low loader up to 8'4" wide
Largeur de transport de 9'10" avec une remorque surbaissée jusqu'à 8'4" de large



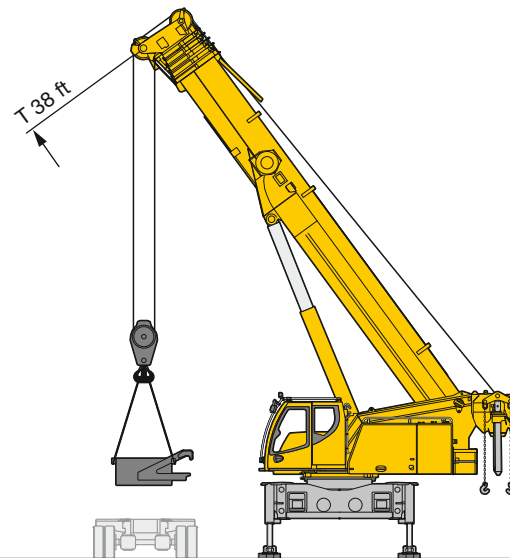
Swinging out the four jack-up cylinders
Extension des 4 vérins Jack-up



Supporting up the crane
Calage de la grue

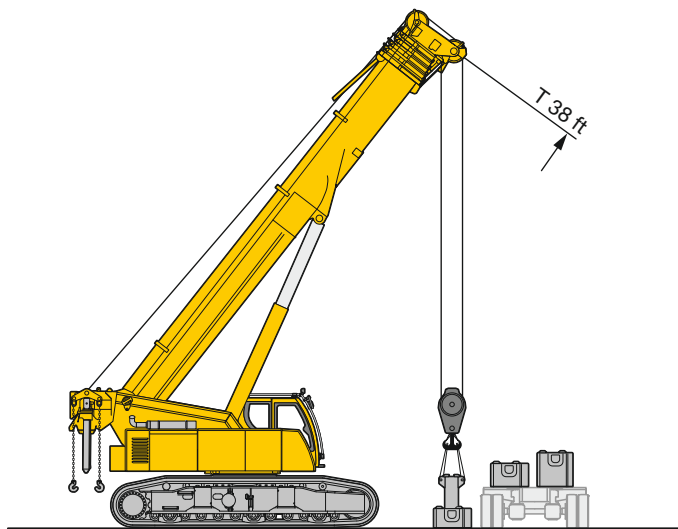
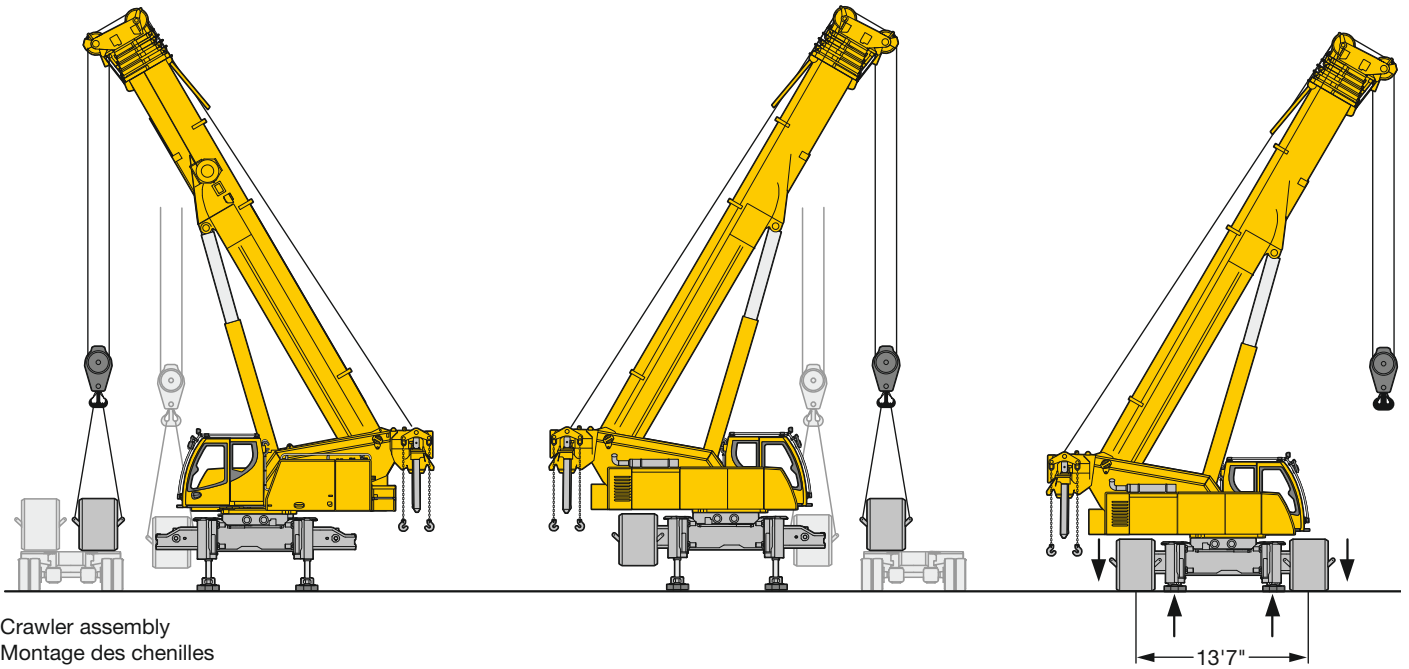


Boom lift to min. 38° on low loader
Relevage à 38° minimum sur la remorque surbaissée

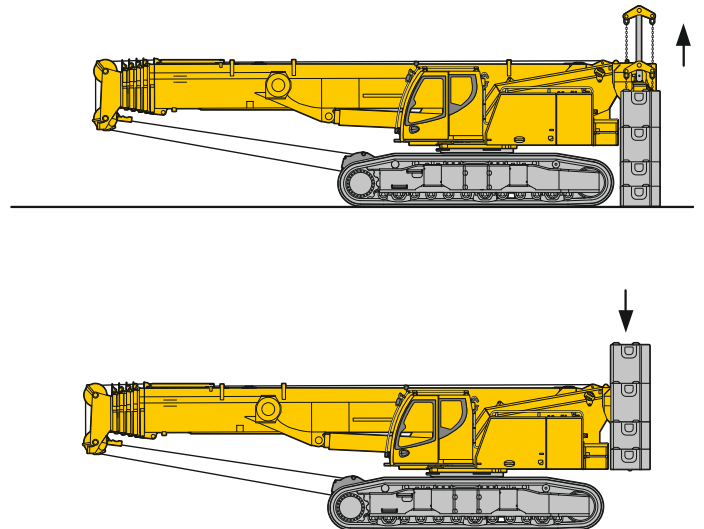


Central ballast assembly (2 x 16,540 lbs)
Montage du contrepois central (2 x 16,540 lbs)

Transportation plan Plan de transport

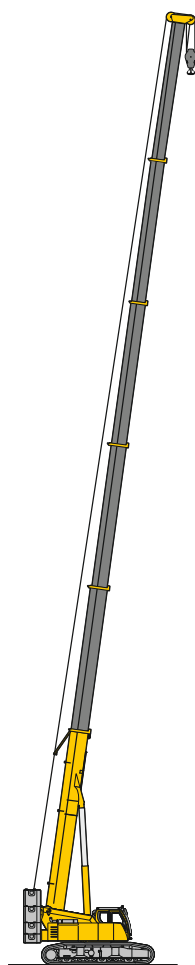


Assembly superstructure ballast
Montage du contrepoids de la partie tournante



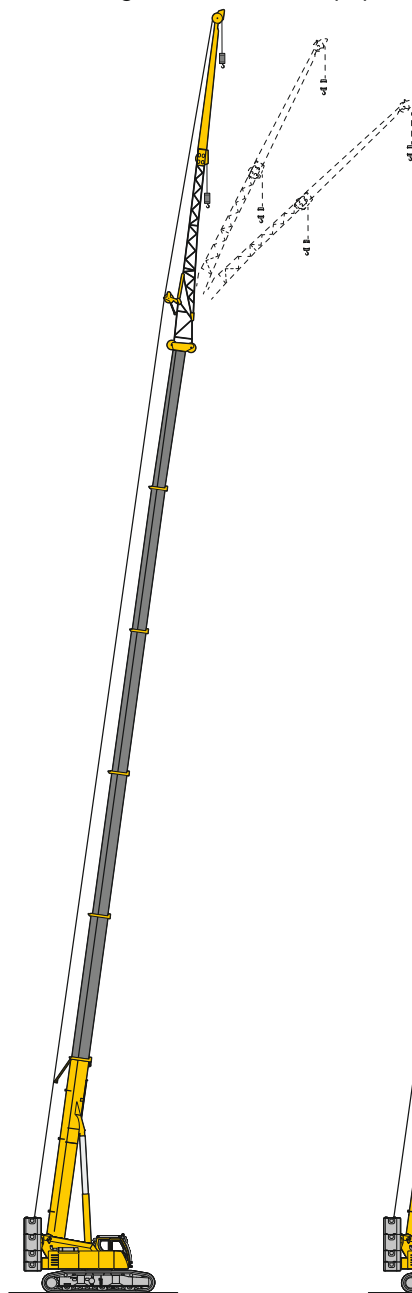
Boom/jib combinations Configurations de flèche

- T** Telescopic boom · Flèche télescopique
- K** Mechanical swing away jib/Erection jib 10 ft
Fléchette pliante mécanique/Flechette de montage 10 ft
- NZK** Hydraulic swing away jib · Fléchette pliante hydraulique
- V** Telescopic boom extension · Rallonge de flèche télescopique



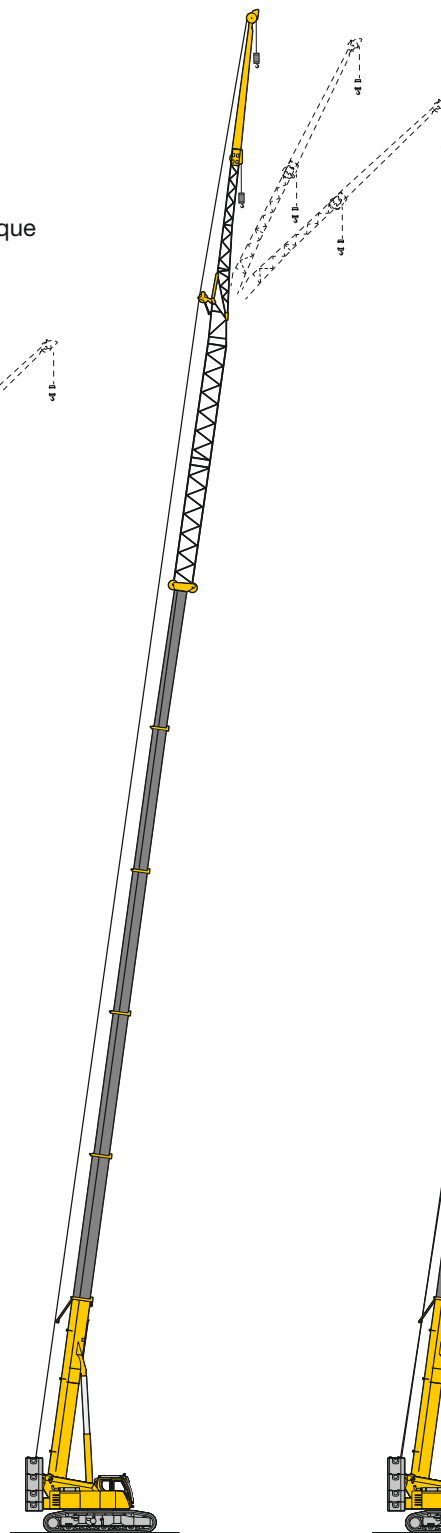
T

12 – 25



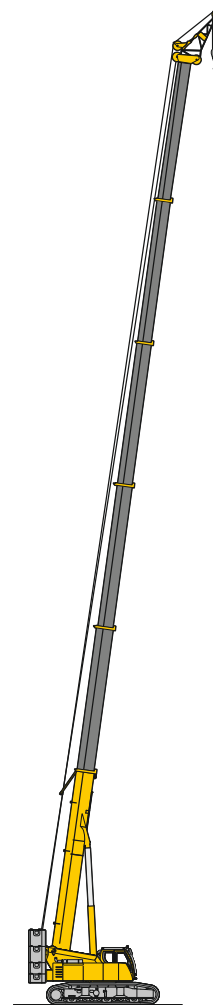
TK/TNZK

26 – 30 / 31 – 35



TVK/TVNZK

36 – 41 / 42 – 47



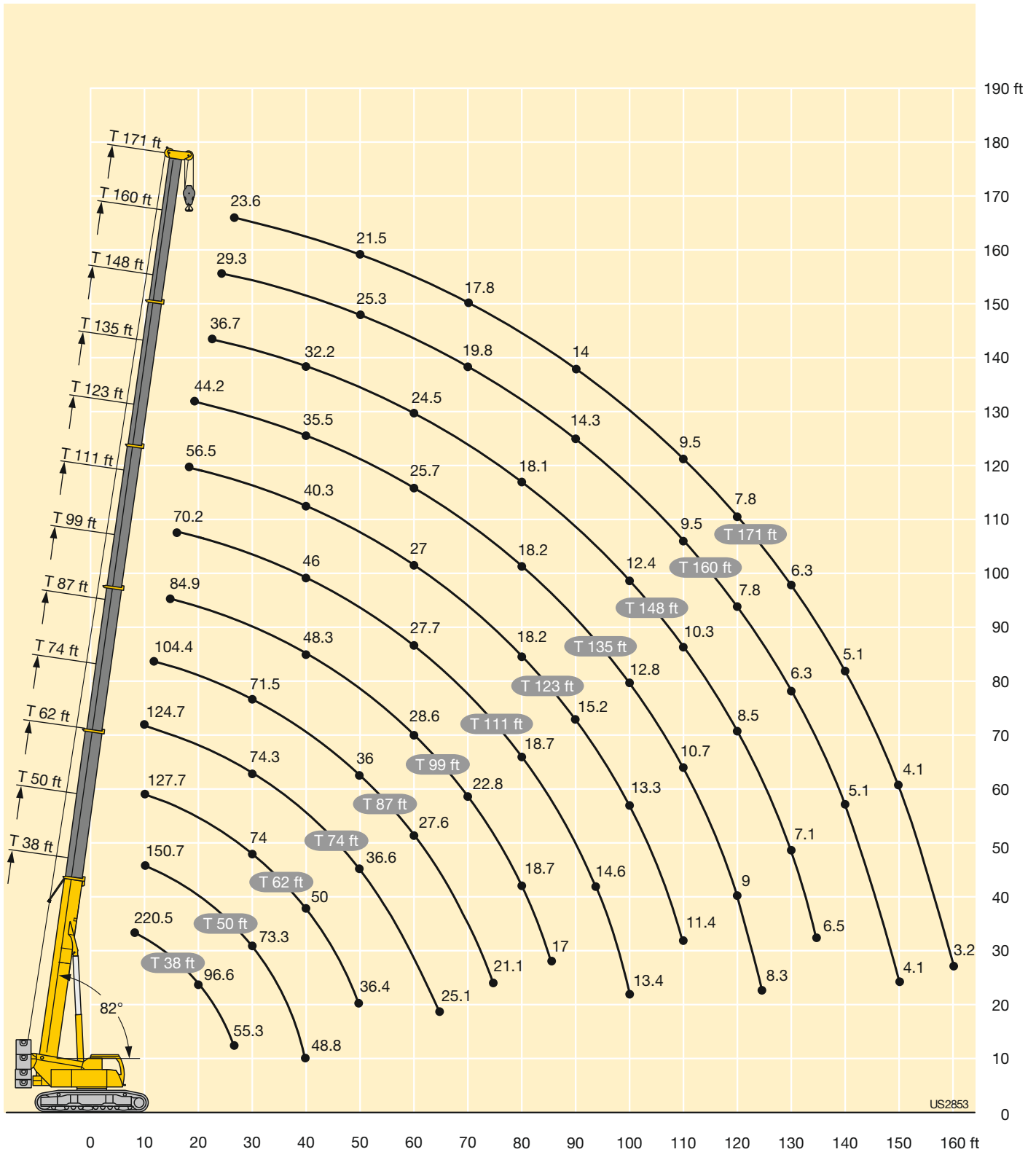
TK

48 – 51

S3119

Lifting heights Hauteurs de levage

T



US2853

